

**EasyWay**



# Intelligent Truck Parking

**J. Kaltwasser**  
**AlbrechtConsult GmbH**

**DATEX II Forum Berlin**  
**March 16/17 2010**



**How does ESG5 support other services?**

**Line of activities**

**The ITP information provision service chain**

**Requirements for ITP information provision**

**Parking Information in (current) DATEX II**

**The 'real world' appears to be more complex!**

**Issues**

**Conclusion**

# How does ESG5 support other services?



## ESG5 has the experts to add new elements to the DATEX II data model

- Feature request for future versions (level A)
- Extension of existing model (level B)
  - Backwards compatible!
  - Can be used immediately (don't have to wait for future DATEX II release)
  - XML messages still in the DATEX II namespace
- Innovative model (level C)
  - Uses DATEX II modelling methodology, but starts from scratch
  - Can (and should) reuse existing elements from DATEX II
    - *Datatypes*
    - *Attributes (including definition and type)*
    - *Classes*

## But: ESG5 does not have the domain knowledge

- Meet Domain experts in one or two initial workshop(s)
- Set up a joint working group to collect stakeholder requirements
  - For small models: ESG5 experts take requirements and create model
  - For complex models: external (EasyWay) project to create model

## Feed result back into the DATEX II process via website and/or ESG5 Technical Group

## **UTP Workshop, May 2009, Koblenz**

- ESG3 organised workshop to set the scene for ITP in EasyWay
- Mixed audience, mainly policy level / non-technical
- Huge pressure to improve efficiency of using parking areas for HGV
- New service required to provide parking availability to HGV drivers

## **ESG5 presentation to inform about how DATEX II can contribute**

## **General agreement to cooperate between ESG3 and ESG5**

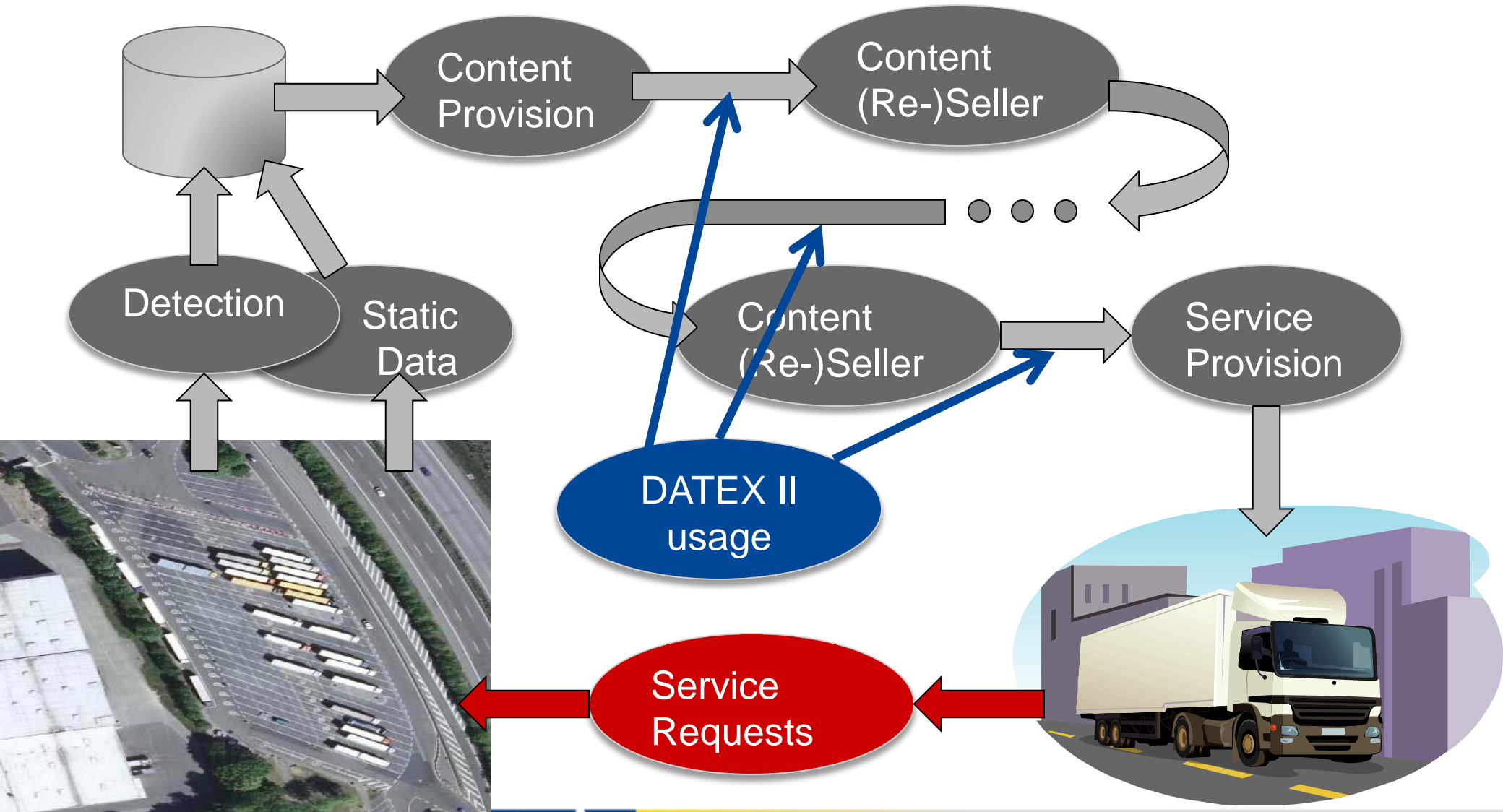
## **Stakeholder workshop planned for autumn 2009**

**(as part of ITP days organised by ESG3)**

## **Workshop results**

- Difficult to elicit stakeholder requirements for new, innovative services
- Service chain and stakeholder roles & responsibilities not entirely clear
- Some organisational problems in building on previous R&D project results
- Agreement to collect relevant stakeholder input via ESG3
- ESG5 to create an improved parking model for DATEX II

# The ITP information provision service chain



## Language independent coding

- Truck drivers from many countries with many different languages

## Rich & unambiguous semantics (“one way to say one thing”)

- Harmonisation of Pan-European services is at the heart of EasyWay
- Truck drivers travel long distances along the TEN-T and require the service all over the network; information provided by the service shall have the same structure and the same meaning anywhere in Europe

## Machine processability

- Database-to-database / business-to-business exchange
- Distinct from data processed for human readers (“rendered data”)
- Usable not only for display but also for calculation (e.g. predictions)

## Long term stability and maintenance for agreed data constructs

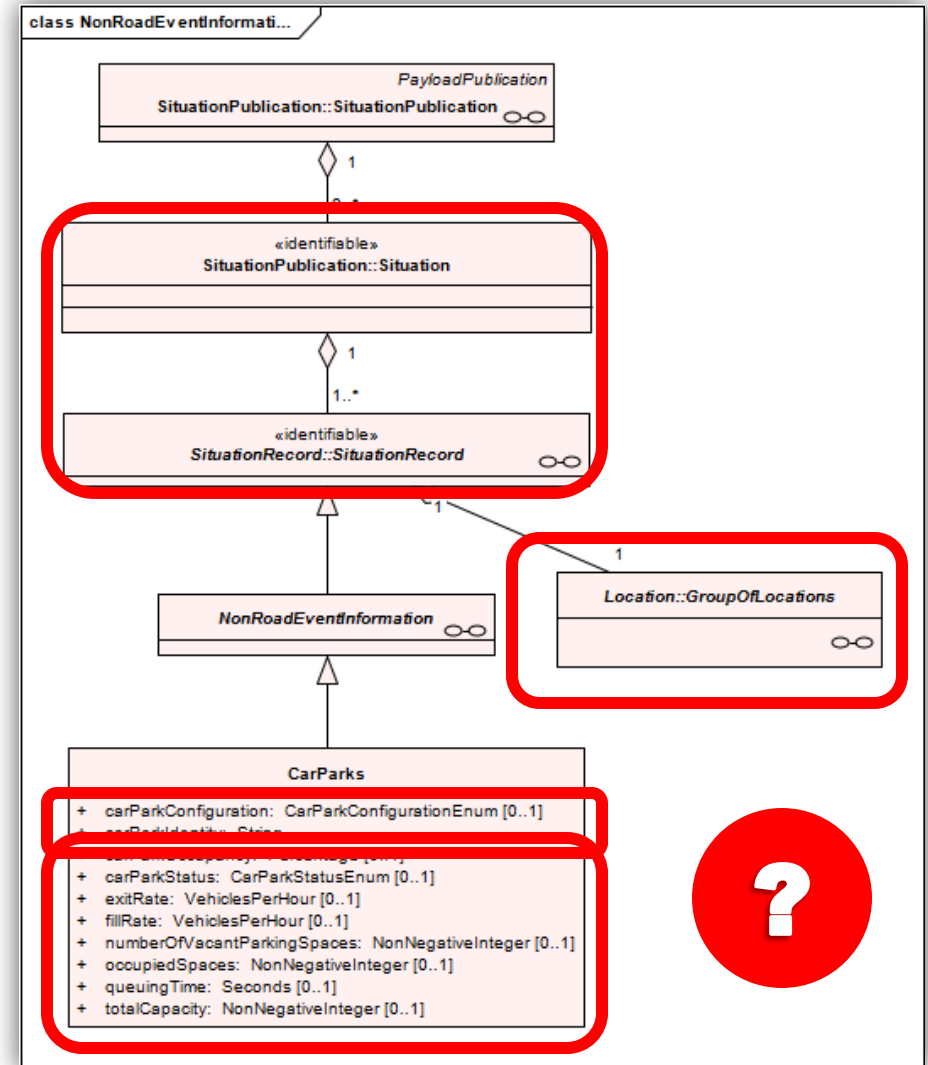
- The world of ITC solutions is fast living; the underlying agreed content structures need to be stable and long living!

## Standardised Services

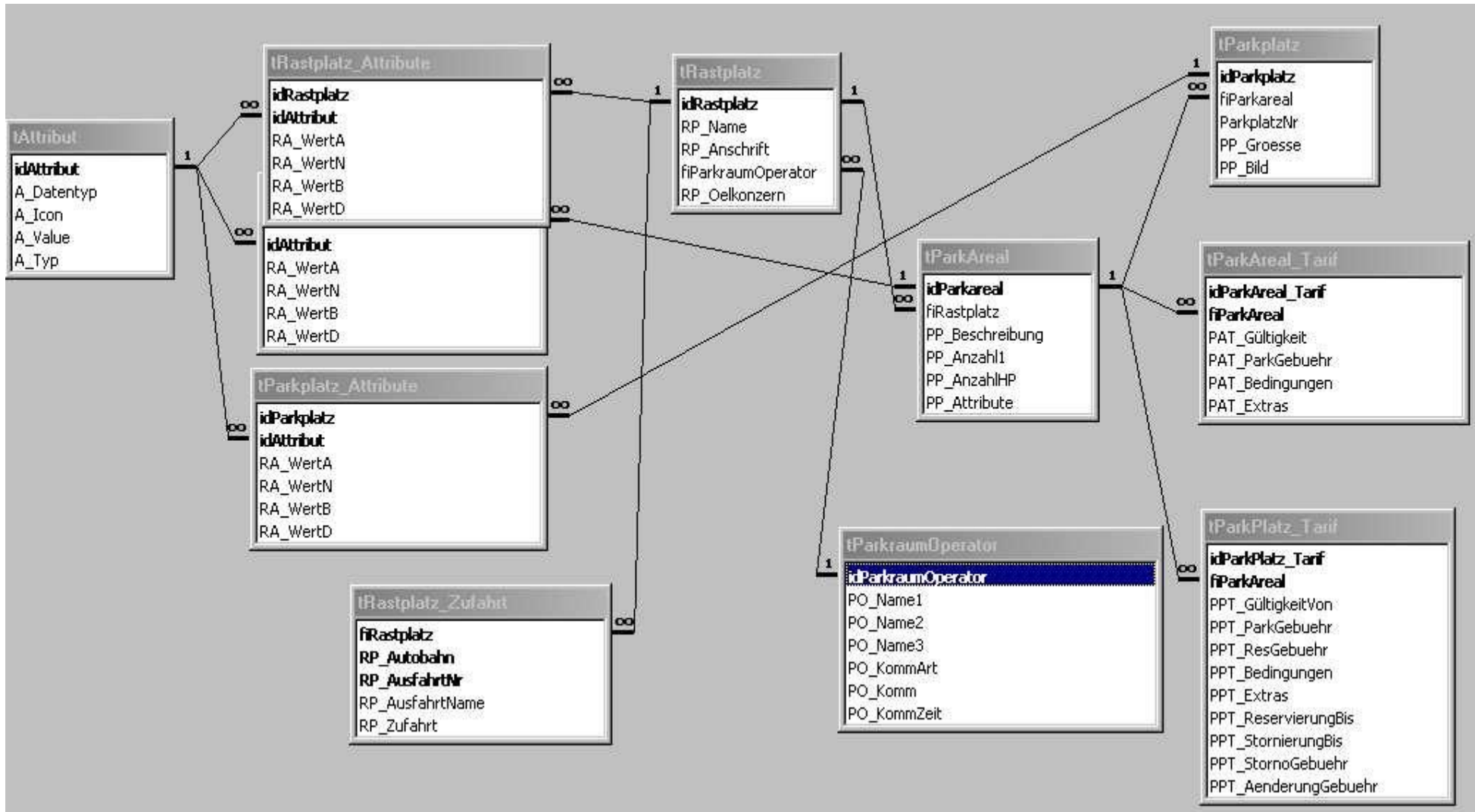
- Data is only part of the story; Motorists use services that may require more than this, e.g. Free Parking space available ⇒ reservation / booking!

## *SituationPublication*

- Used for traffic 'situations'(!)
  - Powerful Location model
  - Basic configuration data
    - Type & Id
  - Current status:
    - Occupancy (%; veh)
    - Capacity (veh)
    - Exit/Fill rate (veh/h)
    - Queuing time (s)
  - ... but is this all that's needed?
- ⇒ ES3/ES5 Cooperation to enhance parking model in DATEX II favourable



# The 'real world' appears to be more complex!





**A DATEX II based, harmonised data model would certainly be useful, but what about – open, standardised – service interfaces (not covered yet in DATEX II)?**

**How can the cooperation between ES3 (pilot) projects and ES5 be facilitated?**

**How can external ITP stakeholders and existing systems/pilots best be incorporated into EasyWay ITP projects?**

**How can the EasyWay projects best be aligned with ITP activities outside EasyWay (e.g. National ITP projects)?**

**How can EasyWay ES5 and the DATEX II standardisation (in CEN) be aligned with the evolution of ITP?**

## **ITP is a very good example, how ESG5 can support other ESGs and stakeholder communities**

- ITP is of strong real world interest
- Specifying an interoperability interface is important for ITP
- ITP content is important for DATEX II
- The current modelling of parking in the DATEX II model is weak

**Collaboration with ESG5 is welcomed by ESG3 and ITP stakeholders**

**A working liaison has been established**

**Stakeholder input (requirements) is currently collected**

**ESG5 will work closely in 2010 to improve the parking model of DATEX II**

**The resulting model (extension) can be used in ESG3 pilot projects**

**Experiences made will be fed back into ESG5 and used for future evolution of the DATEX II model / standard**