



EasyWay

Swedish DATEX II Services - Migrating to Version 2.0

Karolina Hedberg

**Swedish Transport administration /
Viati**

Swedish Transport Administration using DATEX II to deliver traffic information to our internal and external customers.

Approximately 100 customers.

30 new customers in 2011!

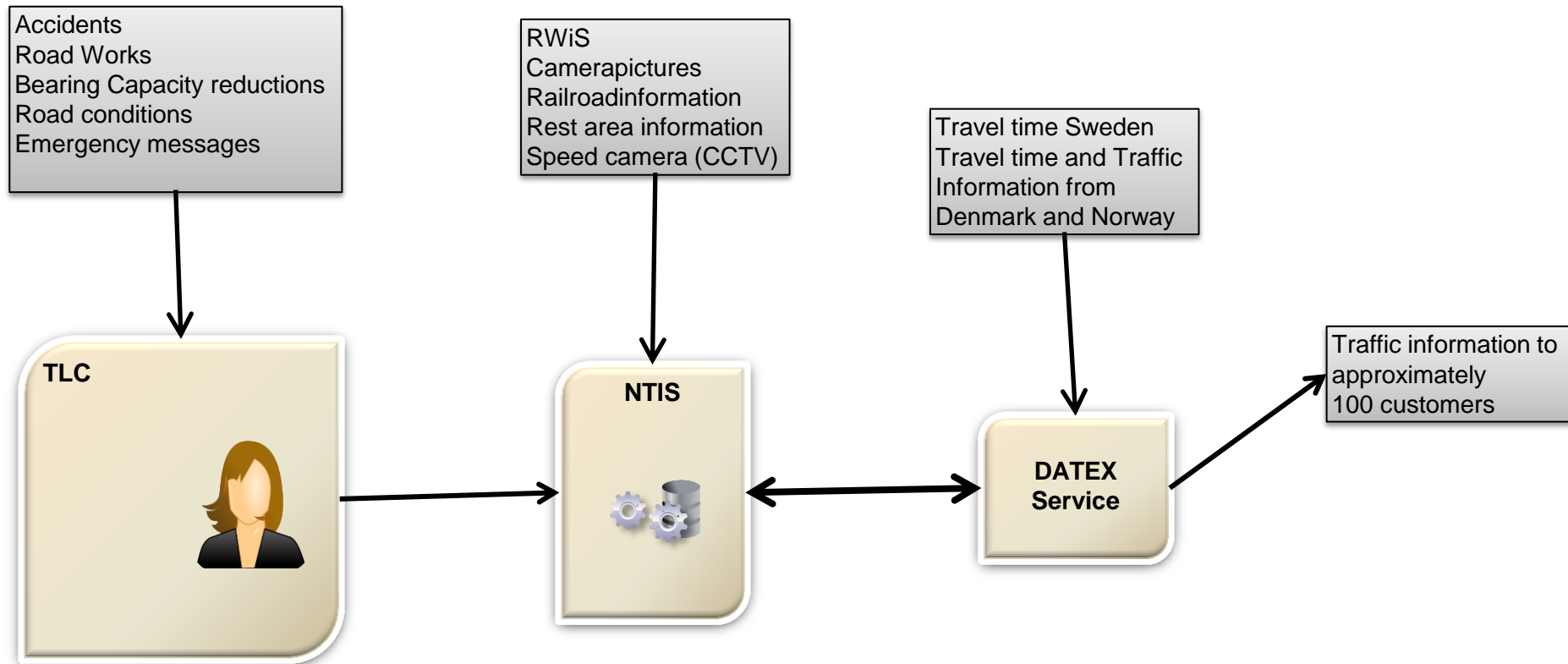
Interest for traffic information is great and the number of customers continues to increase in 2012.



- **Both private individuals and companies**
- **Subscribe to traffic information is free of charge.**
- **Our profit and goal is to reduce accidents and improve traffic safety**
- **Push & Pull**



Traffic Information



What's new?

- **Support for VMS**

This includes the ability to tell the characteristics about the VMS signs and a dynamic publication which tells what is displayed on the VMS signs.

- **Create tailored XML sub schemas**

This means that for each service a smaller XML schema that only includes those pieces that are used can be generated.

- **Metadata services**

- RWIS
- Cameras
- Location code
- Time travel

- **Line string**

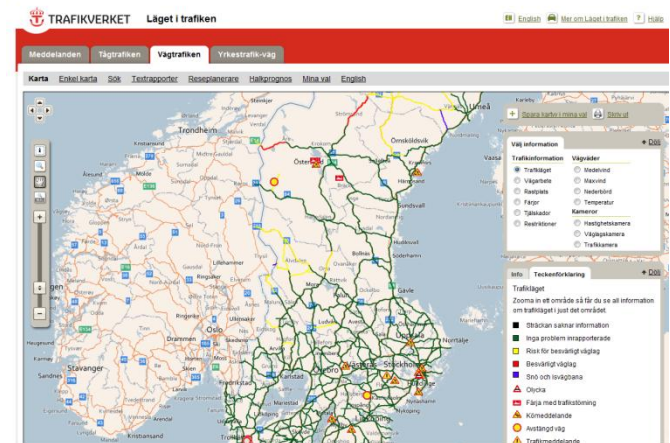
- Coordinates in XML

- **Probability**



How to migrate to 2.0?

- Deploying services one by one
- Test period, Allowing our customers to test in the test environment
- The Traffic Information Web Site "Läget i trafiken".



- **May to September 2012 – test period**
- **September 2012 – Deployment**
- **September 2012 to September 2013 – Migrate period**
- **30 September 2013 – Datex II 1.0 will be closed down**



- **Datex II Specification**

This document will give you brief information of the purpose of DATEX II and how to get information delivered from Swedish National Road Administration.

- **Data dictionary**

- Translated to Swedish

- **Datex II schema**

- **Datex II WSDL**

- **Code examples, which are easy to implement**

- **Test site**

- Customers can verify that the Swedish Transport Administration can deliver traffic information by initialize a question and get the resulting output.

- **List of the most common error messages and their solution**



- **Website for datex project**

Download sample, documentation, data dictionary, tables etc.

- **Project Email**

Respond within 24 hours

The screenshot shows the Trafikverket website with a red header and navigation menu. The main content area is titled 'Prenumerera på Trafikverkets data för vägtrafikinformation'. It includes a sidebar with a tree view of navigation options, a main text area with sub-sections like 'Utvecklar du tjänster som baseras på trafikinformation?', 'Det här kan datat användas till', 'Så här kommer du igång', and 'Härifrån kommer datat', and a right sidebar with a 'Kortfattad teknisk information' box. The website is in Swedish and features a search bar and various utility links at the top.



- **New production environment**
- **Challenge to get our customers to begin their upgrade in time**



Thank you very much for your attention

