

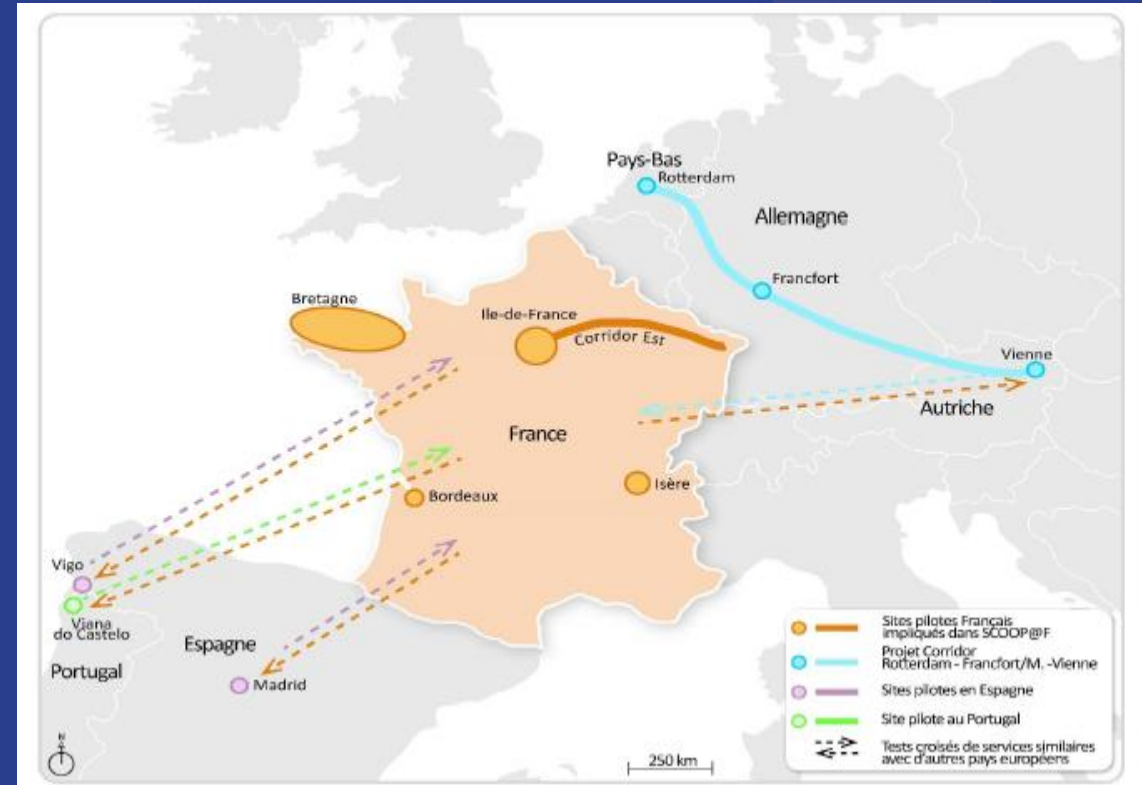
DATEX II

Enhanced road works in DATEX II For French C-ITS projects

(Datex II v2.3)

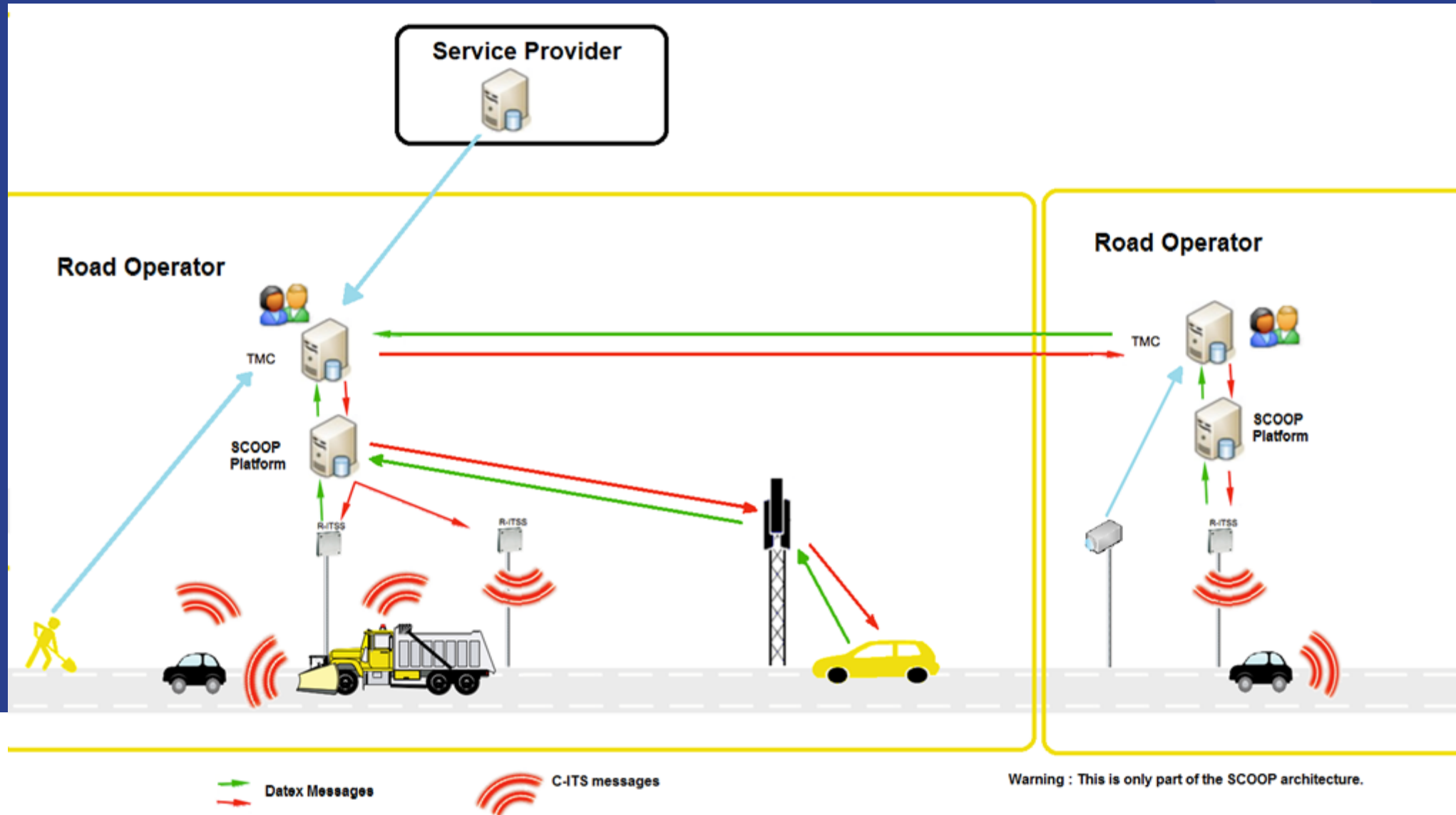
Emilie PETIT, CEREMA - emilie.petit@cerema.fr

SCOOP : who and where ?



DATEX II

SCOOP Architecture



SCOOP : Which Roadworks ?

- B1 : Alert planned Roadworks (RWW)
- B2 : Alert operator vehicle :
 - B2a : approaching
 - B2b : in intervention
 - B2c : in patrol
- B3 : winter maintenance
 - B3a : salting in process
 - B3b : Snow removal in process
 - B3c : Alert vehicle moving

DATEX II

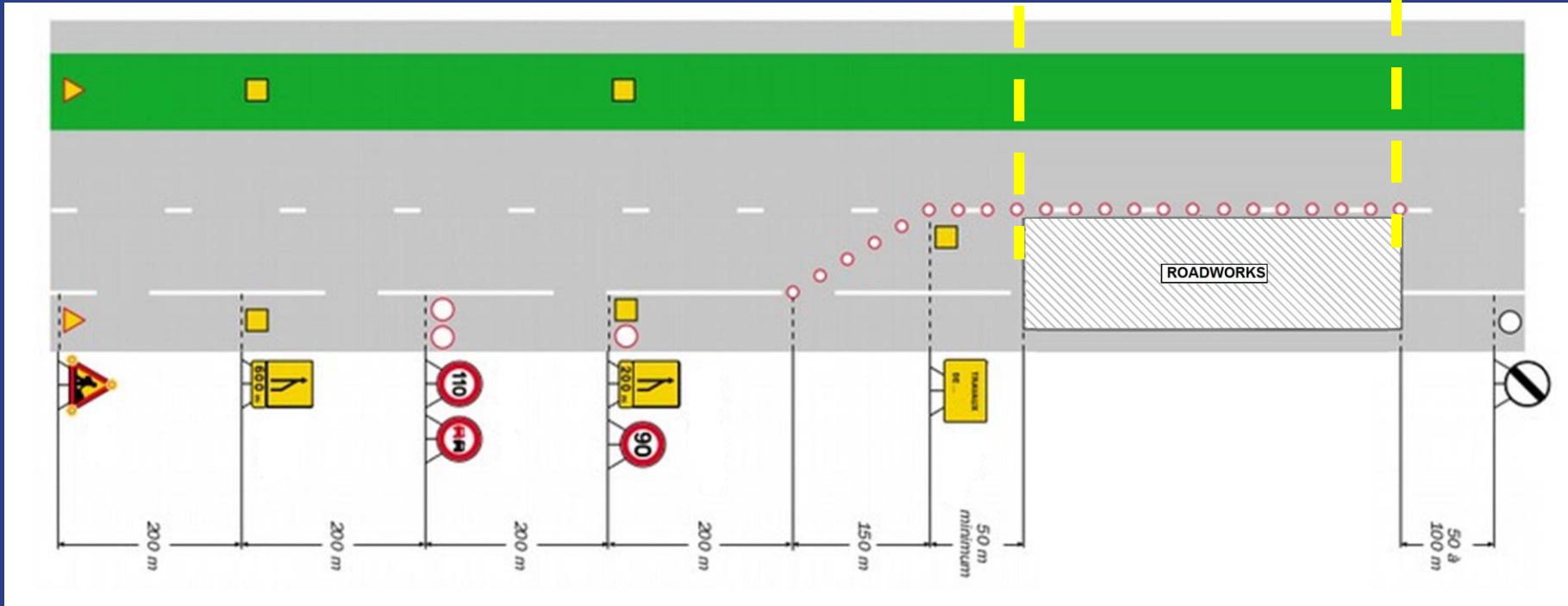
Roadworks ? Easy for a TCC !

A4

PR5

PR6

PR7



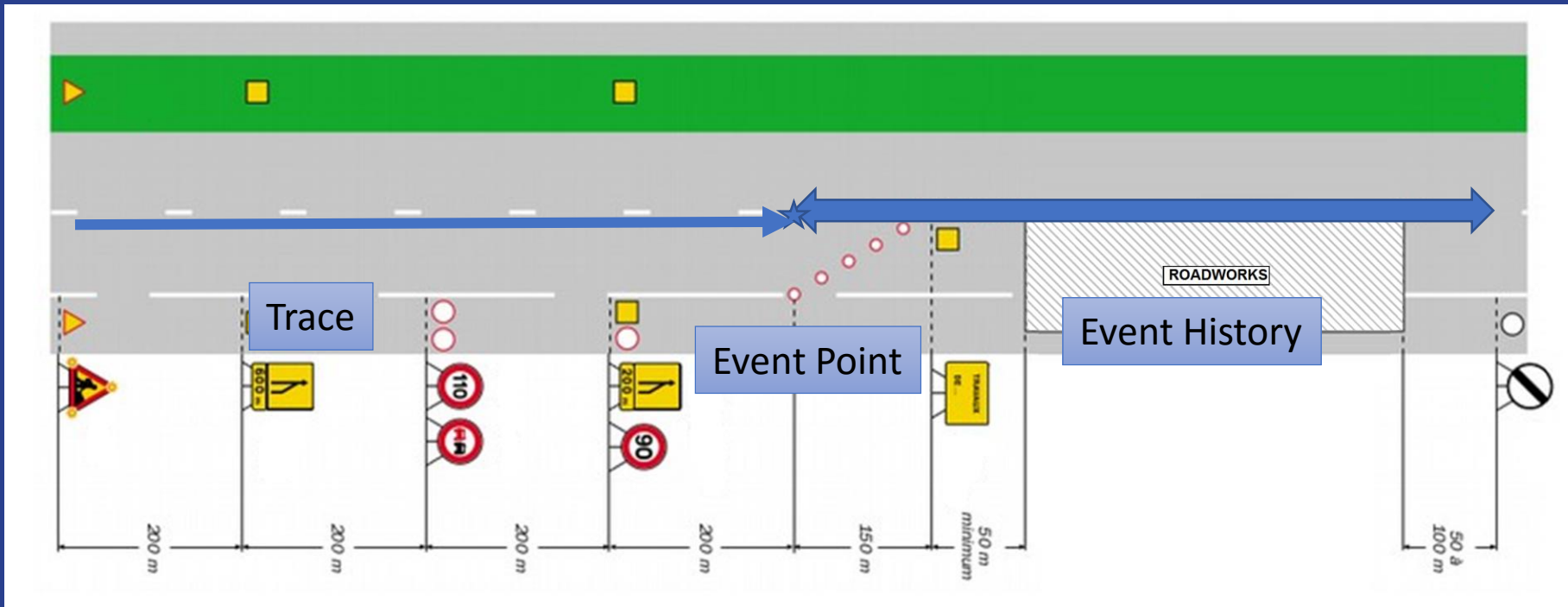
- Roadworks
- Maintenance Works
- On A4
- From PR6+200m
- To PR6+950m
- From April 2018 the 19th, 00:00:00
- To April 2018 the 26th, 23:59:59
- Speed limit : 90 km/h

DATEX II

Roadworks ? Easy for a car !

Warning : Roadworks in 300 m
Keep to the left

Warning : Roadworks – 90 km/h



- Roadworks
- Stationary
- From Eventpoint (X,Y)
- Along Eventhistory
- With the trace leading to the event(X'a, Y'a),...(X'n, Y'n), (X''a,Y''a)...
- From April 2018 the 19th, 00:00:00
- To April 2018 the 19th, 23:59:59
- Speed limit : 90 km/h
- Slow lane close
- Keep to the left

DATEX II

From TC to Cars : Easy with the Platform.

- Roadworks
- Maintenance Works
- On A4
- From PR6+200m
- To PR6+950m
- From April 2018 the 19th, 00:00:00
- To April 2018 the 26th, 23:59:59
- Speed limit : 90 km/h
- Lanes closed : 50%
- Management : keep to the left

SCOOP PLATFORM

- Roadworks
- Maintenance Works
- Stationary
- From Eventpoint (X,Y) (=PR6+200m)
- Linear : (Xa, Ya), (Xb, Yb)...(Xn, Yn) (from PR6+200 to PR6+950)
- Traces : (X'a, Y'a),...(X'n, Y'n), (X''a, Y''a)...
- From April 2018 the 19th, 00:00:00
- To April 2018 the 19th, 23:59:59
- Speed limit : 90 km/h
- Management : keep to the left

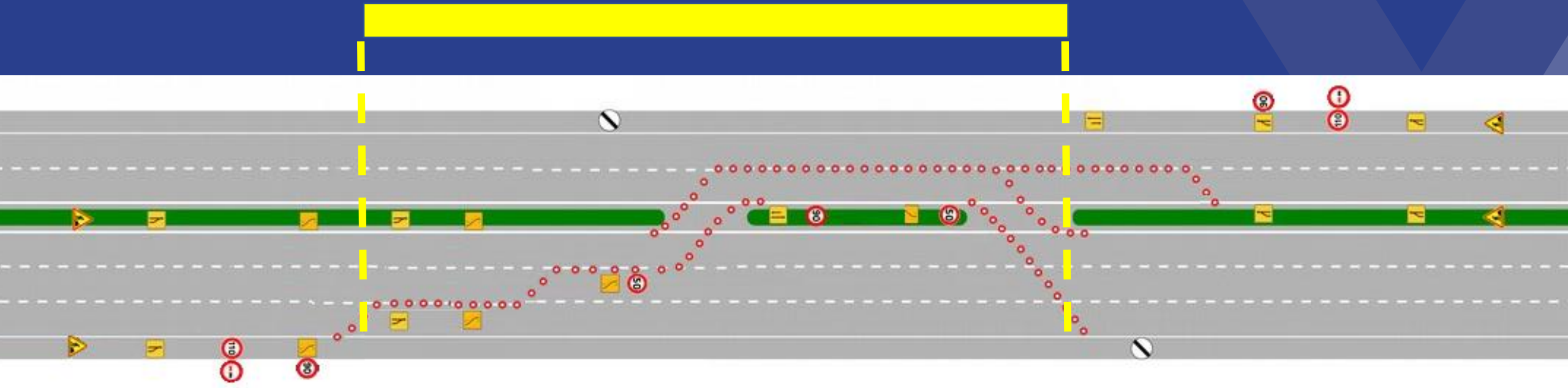
RSU

- Roadworks
- Stationary
- From Eventpoint (X,Y)
- Along Eventhistory
- With the trace leading to the event(X'a, Y'a),...(X'n, Y'n), (X''a, Y''a)...
- From April 2018 the 19th, 00:00:00
- To April 2018 the 19th, 23:59:59
- Speed limit : 90 km/h
- Slow lane close
- Keep to the left

Let's complicate things!

.. No.. Quite easy for a TCC!

A4 PR5 PR6 PR7



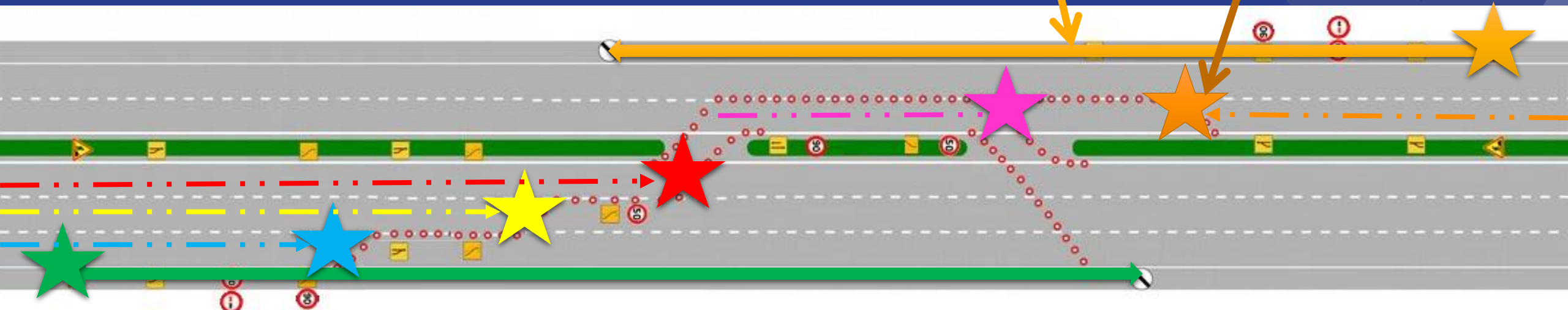
DATEX II

For the car...

Two linked DENM

Roadworks

Roadworks
Fast lane closed



RoadWorks

Slow Lane Closed

Middle Lane Closed

Switch Carriageway

Switch Carriageway

All linked DENM

Arrrgggggghhh...

- Roadworks
- Maintenance Works
- On A4
- From PR5+500m
- To PR7m
- From April 2018 the 19th, 00:00:00
- To April 2018 the 26th, 23:59:59
- Speed limit : 90 km/h

SCOOP PLATFORM



RSU

- Roadworks
- Roadworks
- Roadworks
- Roadworks
- Roadworks
- Roadworks
- Roadworks
- Stationary
- From Eventpoint (X,Y)
- Along Eventhistory
- With the trace leading to the event(X'a, Y'a),...(X'n, Y'n), (X''a,Y''a)...
- From April 2018 the 19th, 00:00:00
- To April 2018 the 19th, 23:59:59
- Speed limit : 90 km/h
- Slow lane close
- Keep to the left

.. Not so easy for a TCC...

- Roadworks
- Roadworks
- Roadworks
- Roadworks
- Roadworks

- Roadworks
- MaintenanceWorks
- On A4
- From PR5+500m
- To PR7
- From April 2018 the 19th, 00:00:00
- To April 2018 the 26th, 23:59:59
- Speed limit : 90 km/h

SCOOP PLATFORM

- Roadworks
- Roadworks
- Stationary
- From Eventpoint
- Along Eventhistory
- With the trace
- From 06.01.2018 the 00:00:00
- To April 2018 the 23:59:59
- Speed limit : 90
- Slow lane close
- Keep to the left

RSU

- Roadworks
- Roadworks
- Roadworks
- Roadworks
- Roadworks

- Roadworks
- Stationary
- From Eventpoint (X,Y)
- Along Eventhistory
- With the trace leading to the event(X'a, Y'a),...(X'n, Y'n), (X''a,Y''a)...
- From April 2018 the 19th, 00:00:00
- To April 2018 the 19th, 23:59:59
- Speed limit : 90 km/h
- Slow lane close
- Keep to the left

Conclusion and perspectives

- Simply situation => simply message
- The flexibility of Datex II allows a large number of use cases
- The ability of TCC to evolve is necessary ...
 - ... for the autonomous cars

DATEX II