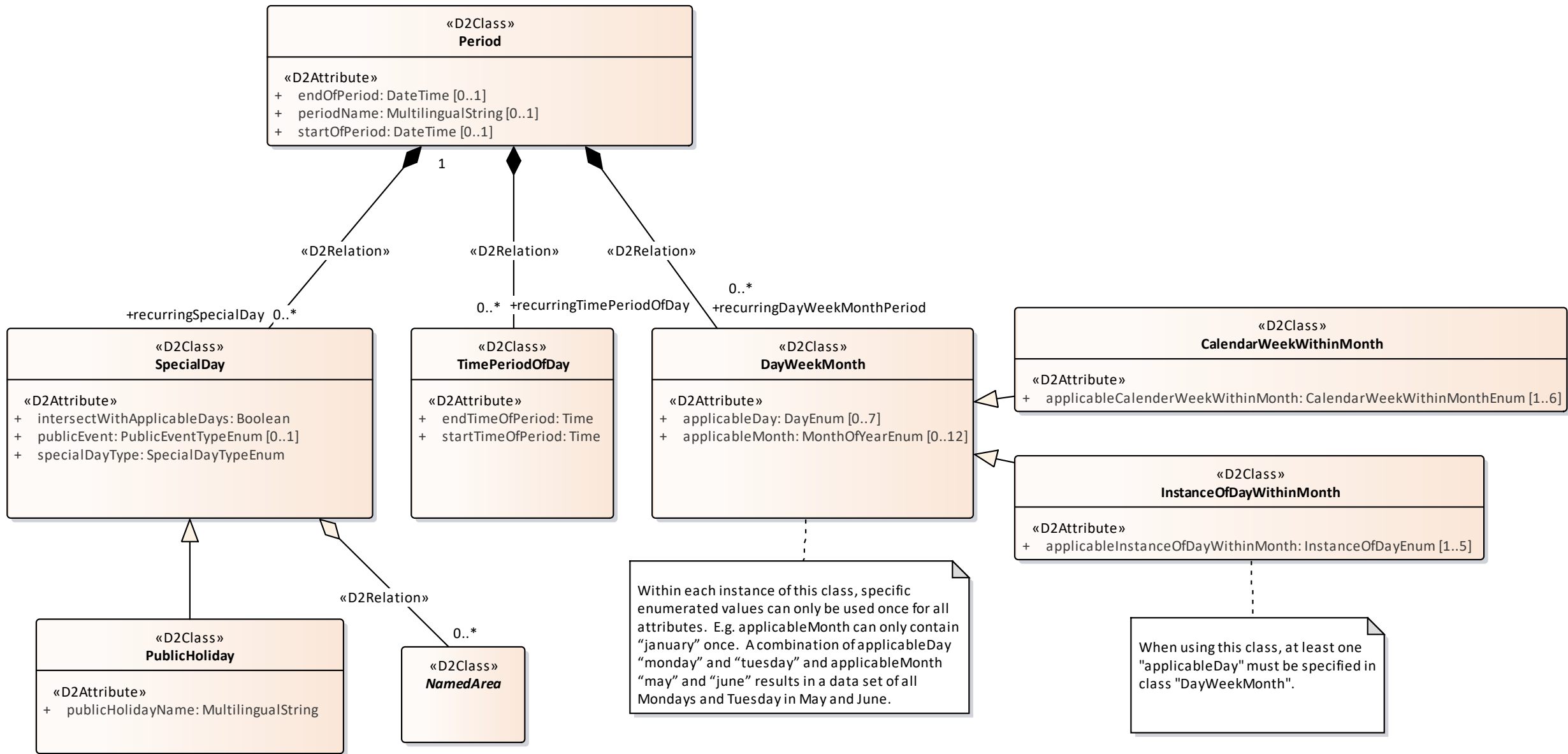


DATEX II data model content changes for v3

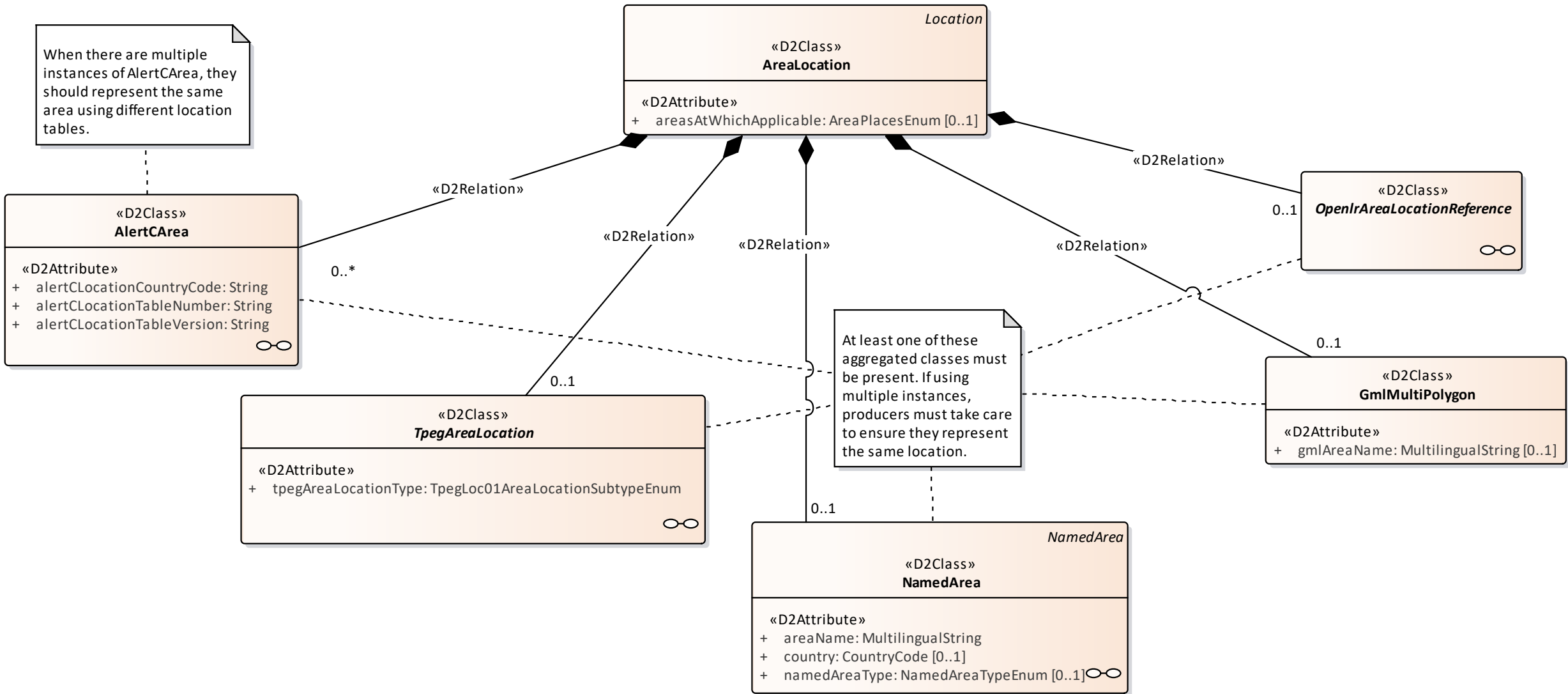
177 changes

8 countries

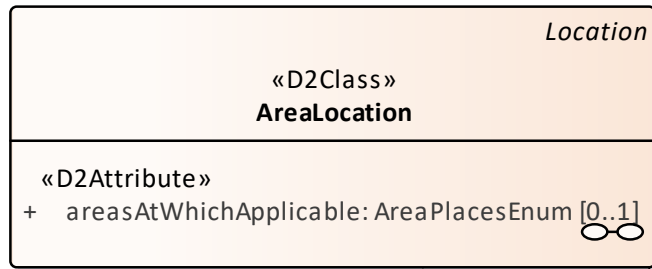
DATEX II



class AreaLocation



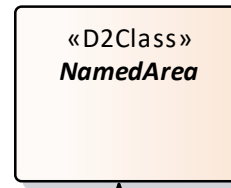
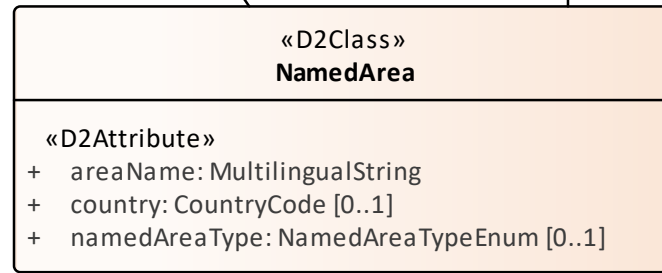
class NamedArea



(from D2Payload::LocationReferencing::LocationReference)

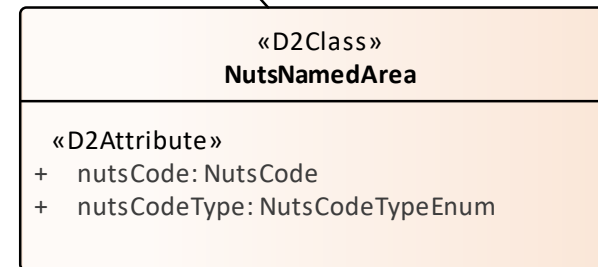
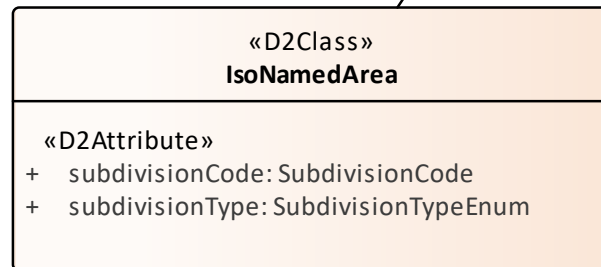
«D2Relation»

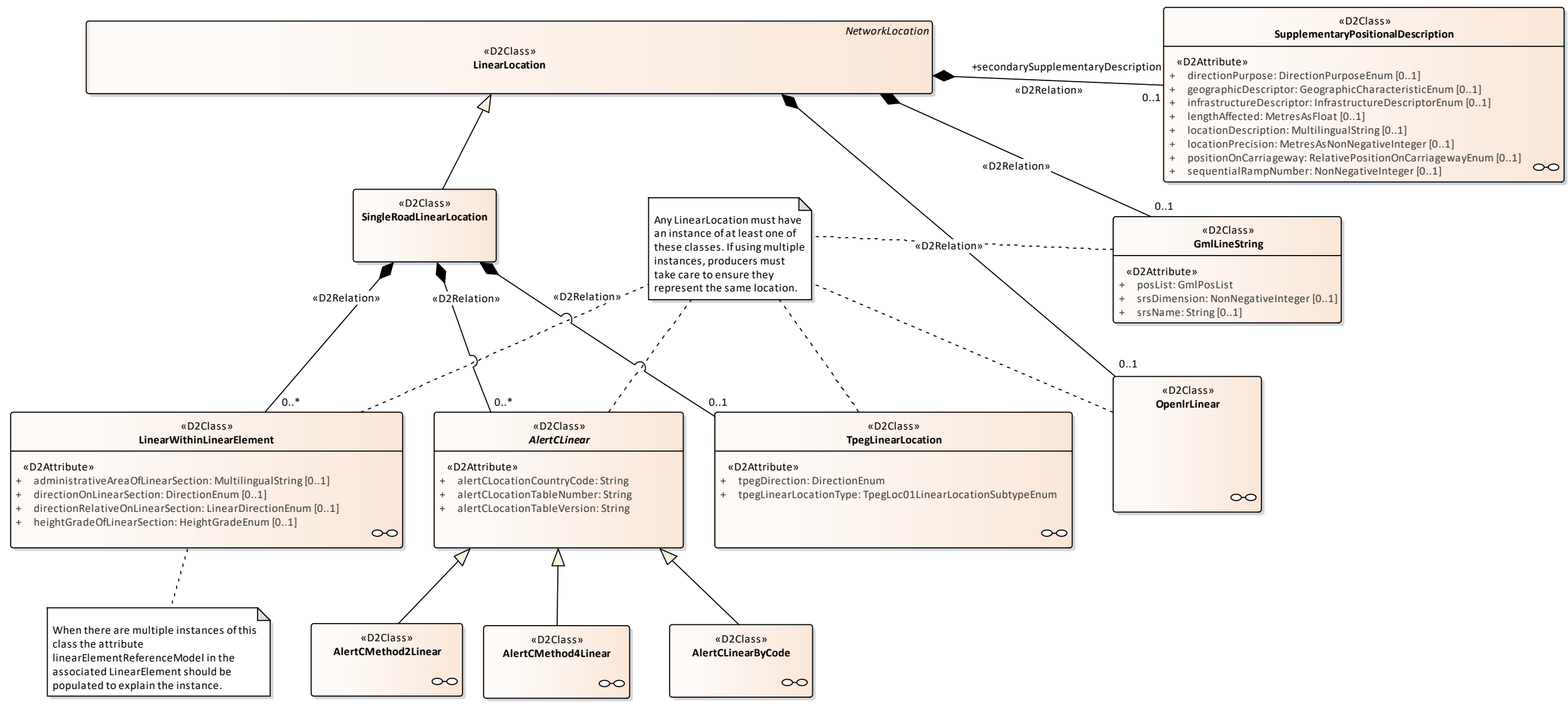
0..1

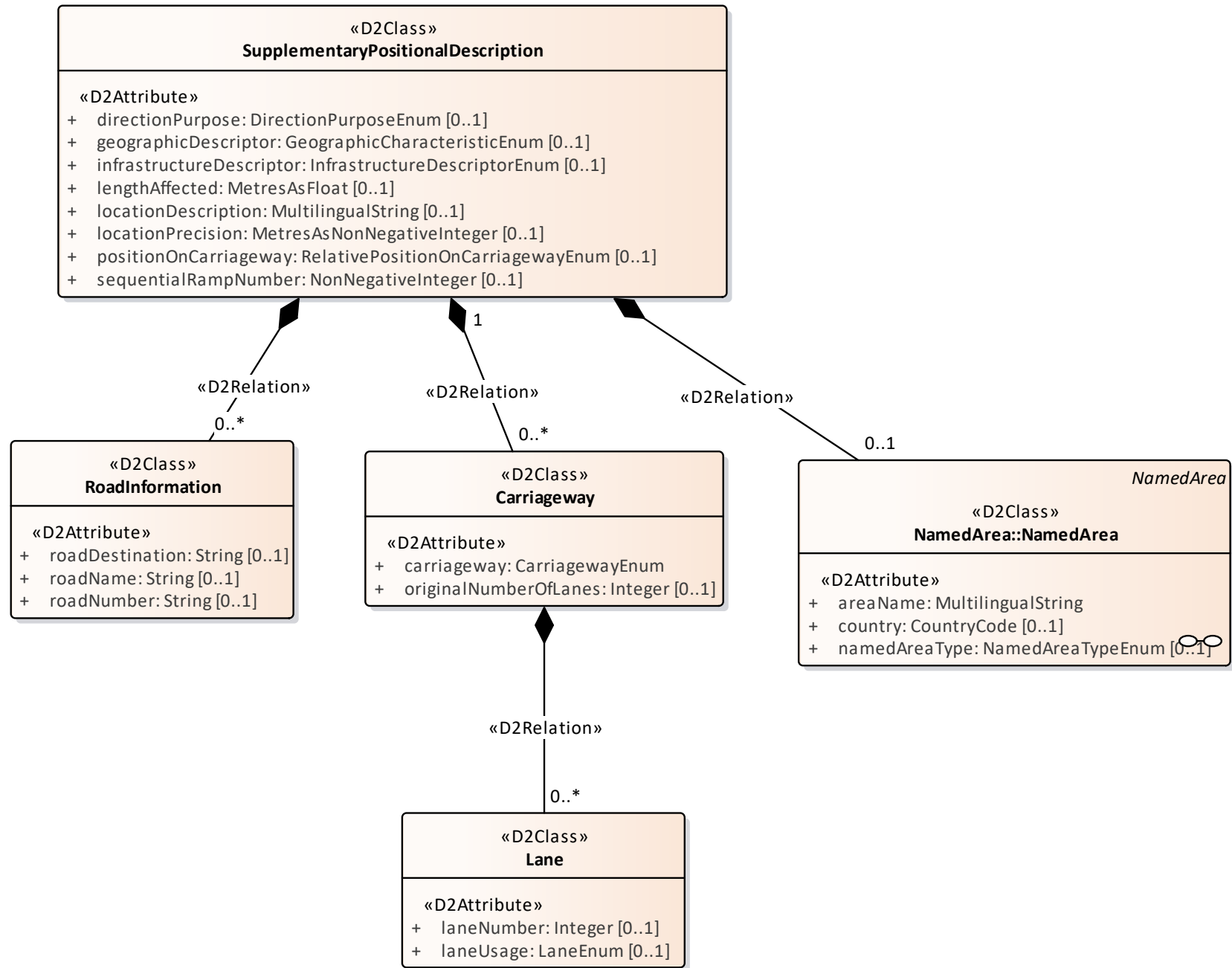


(from D2Payload::Common::Classes::Validity)

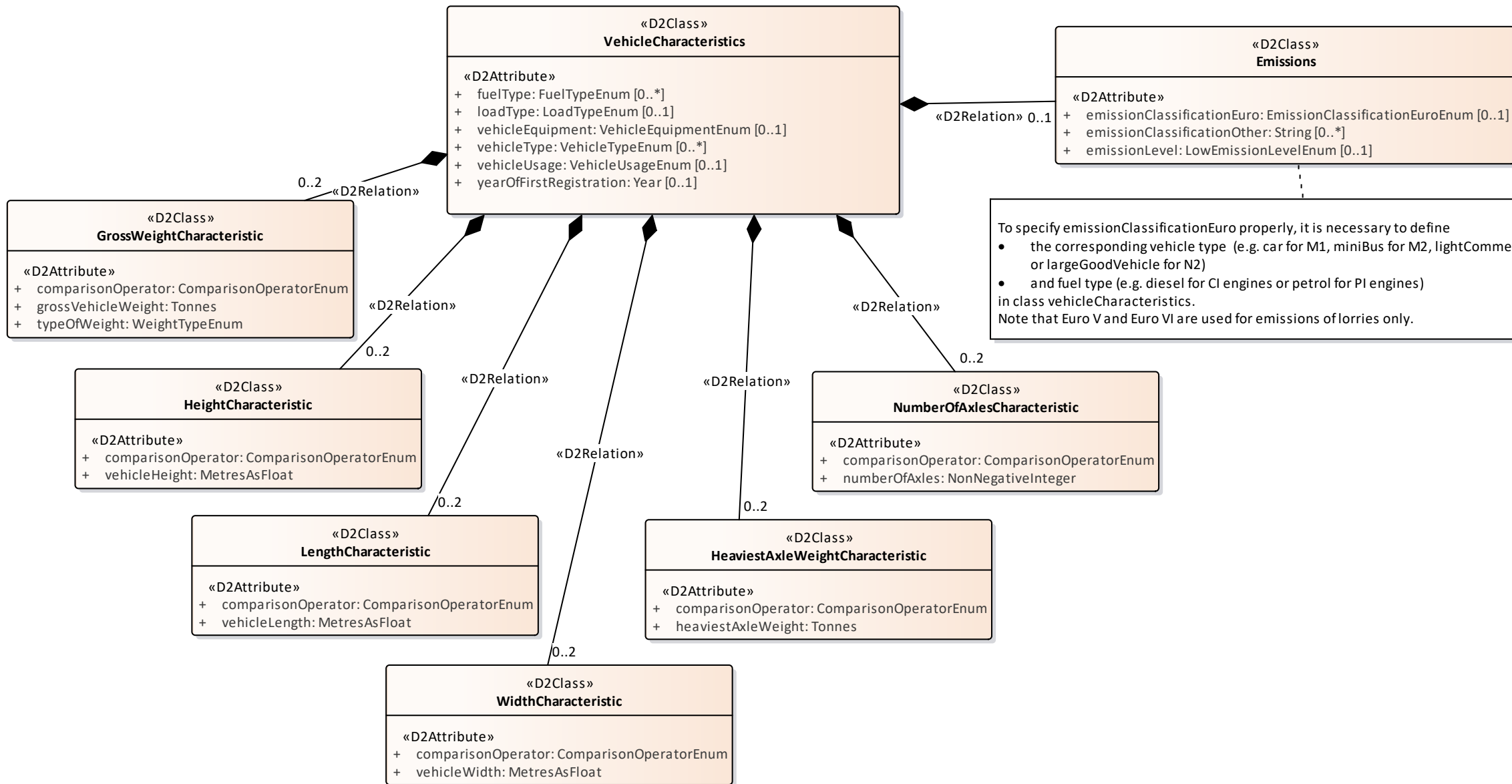
NamedArea in namespace LocationReferencing is a specialisation of NamedArea in NameSpace Common, to support a generic hook system between the two namespaces.







class VehicleCharacteristics



To specify emissionClassificationEuro properly, it is necessary to define

- the corresponding vehicle type (e.g. car for M1, miniBus for M2, lightCommercialVehicle for N1 or largeGoodVehicle for N2)
- and fuel type (e.g. diesel for CI engines or petrol for PI engines)

in class vehicleCharacteristics.
 Note that Euro V and Euro VI are used for emissions of lorries only.