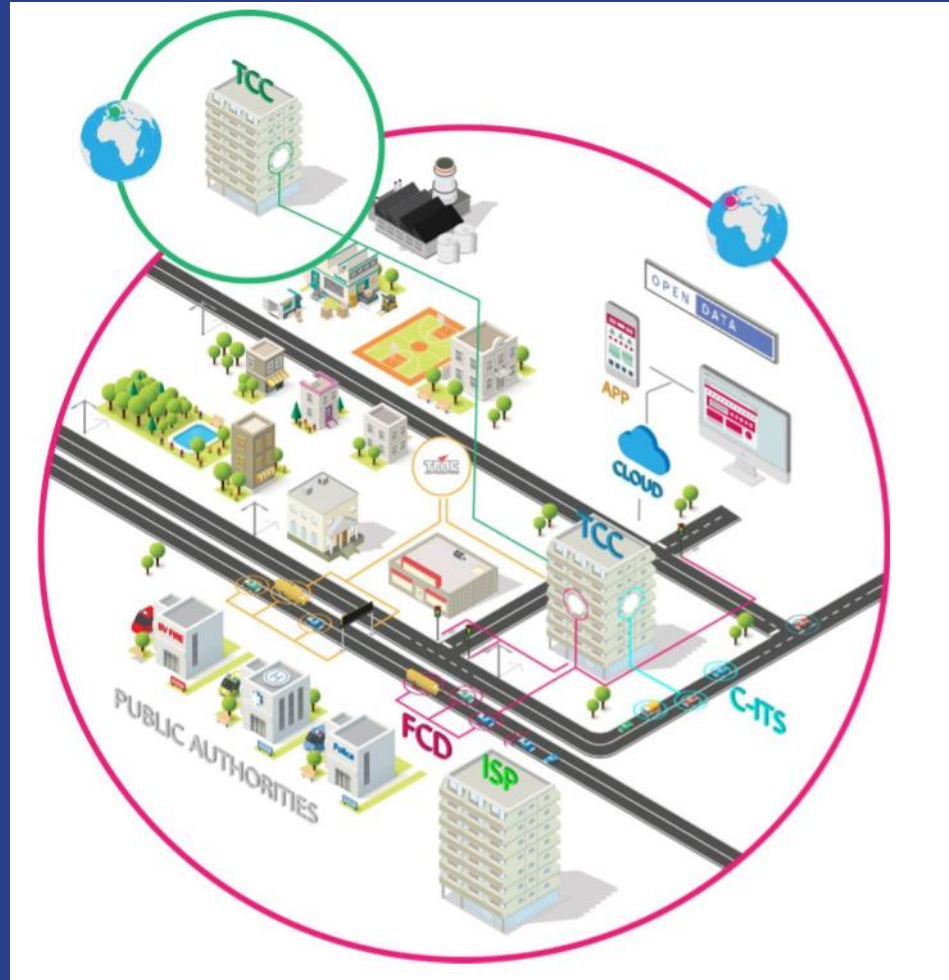


# D2LIGHT

PROPOSAL WITH BEST PRACTISE  
TARGETING APP-DEVELOPERS

# DATEX II

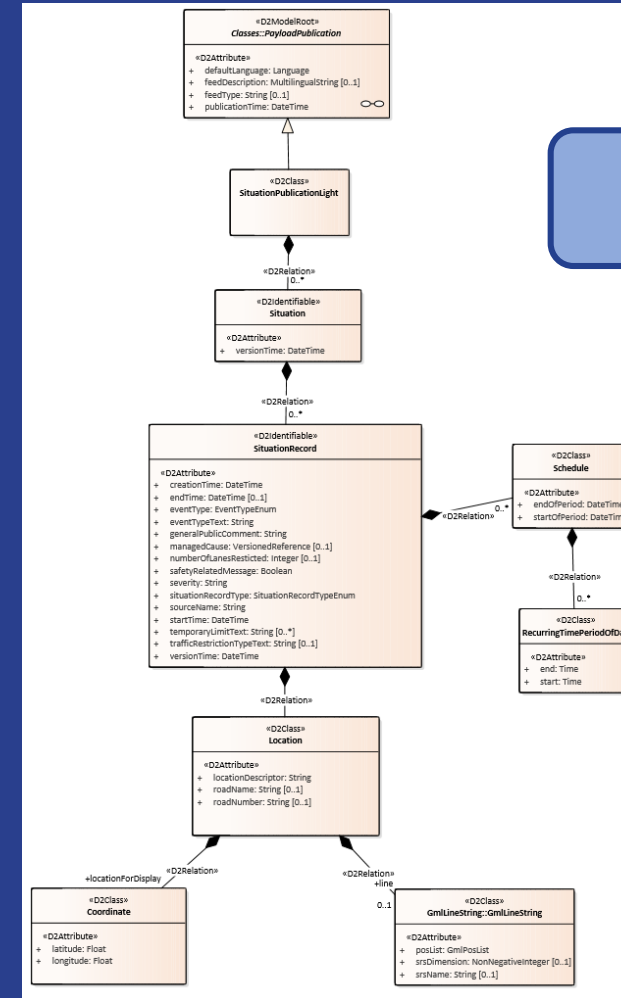


5<sup>th</sup> DATEX II Forum  
Utrecht  
23-24 May 2018

## PRINCIPLES OF D2LIGHT

- Flat Model
- Less detailed
- RESTful/ JSON
- Self contained
- Easy processing
- Ordinary publications
- Filtering
- DATEX II Tool support

## SIMPLIFIED SITUATION PUBLICATION



## POC APP, TEST IMPLEMENTATION

- JSON Schema
- Endpoints
  - ✓ Portugal
  - ✓ Sweden
  - ✓ Netherlands
- Live Data
- iOS, Android
- Give feedback in the app

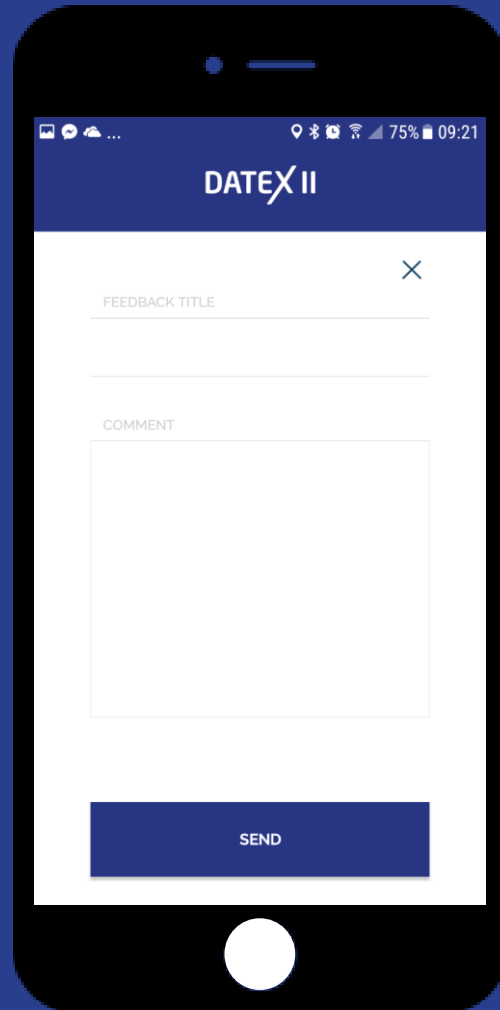
```
DATEX II

D2Light Message X

{
  "id": "GUID5c091518-
fe7f-47c4-8bdd-5dbe92471347",
  "versionTime": "2018-05-04T08:41:34.973+01:00",
  "situationRecord": {
    {
      "id": "SE_STA_TRISSID_1_13520539",
      "creationTime": "2018-05-04T07:52:38.48+01:00",
      "versionTime":
'2018-05-04T08:41:34.973+01:00',
      "startTime": "2018-05-04T07:48:17+01:00",
      "endTime": "2018-05-04T10:00:00+01:00",
      "type": {
        "value": "accident"
      },
      "detailedType": {
        "value": "accidentInvolvingHeavyLor"
      },
      "detailedTypeText": "Olycka med tungt
severty": "",
      "safetyRelatedMessage": false,
      "sourceName": "Trafikverket",
      "generalPublicComment": "Lastbils sl 
rondellen V rdsberg. Fr n rondellen V rc
s  kan man inte  ka s derut mot  tvadab
      "temporaryLimitText": {
        "schedule": {
          "location": {
            "locationDescriptor": "V g 35 vid
Cirkulationsplats V rdsberg i riktning mot
 verum i Osterg tlands l n (E)",
            "coordinatesForDisplay": {
              "latitude": 58.397487640380859,
              "longitude": 15.765944480895996,
              "coordinateExtension": {
            },
          },
        },
      },
    },
  },
}
```

The screenshot displays the DATEX II application interface. At the top, the DATEX II logo is visible. Below it, a 'FILTER BY' dialog box is open, showing a list of 'TYPE OF SITUATION' with 'Accident' and 'Obstruction' selected. Under 'ENDPOINTS', 'Netherlands', 'Portugal', and 'Sweden' are listed. An 'APPLY' button is at the bottom of the filter menu. In the background, a map of Europe shows several location markers: a blue circle with a white 'X' in the UK, a blue circle with a white 'X' in Sweden, and a blue circle with a white 'X' in the Netherlands. A yellow arrow points from the 'Accident' filter option to the marker in Sweden, and another yellow arrow points from the 'Obstruction' filter option to the marker in the Netherlands.

# DATEX II



APP

- Feedback
- Comments
- Suggestions

DATEX II

# Thank you!

For more information on D2Light:  
[www.datex2.eu](http://www.datex2.eu)

BO BJERKEHOLT  
[bo.bjerkeholt@trafikverket.se](mailto:bo.bjerkeholt@trafikverket.se)



# DATEX II